

EVOLVE CPET Trays The Next Generation of Sustainable Food Packaging

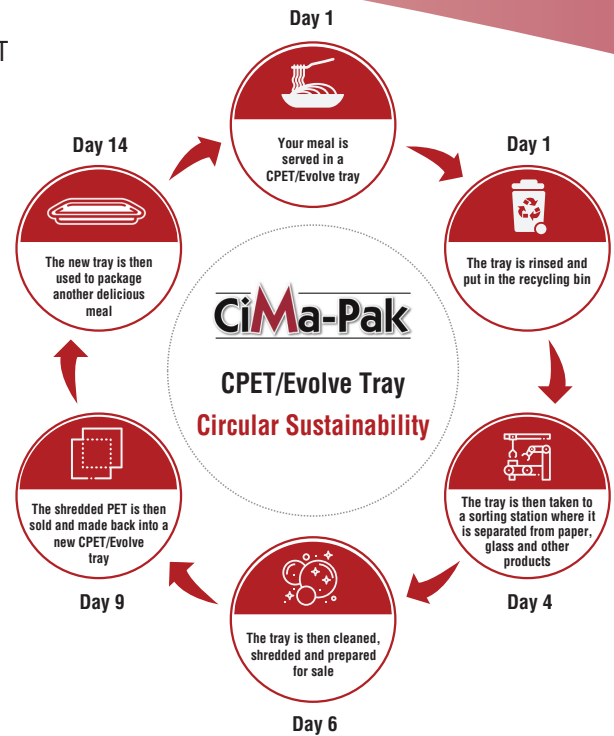
Circularity in food packaging advances as the CPET **Evolve** product range for the Ready Meals is introduced.

The food packaging consists of 80% post-consumer recycled PET coming from collected and recycled bottles and trays and is efficiently recyclable into new food grade products without compromising any functional properties.

The **Evolve** trays come in naturally fluctuating colours only, reflecting the blend of recycled bottles and trays they consist of without any extra colour added.

This gives a unique look to the range, and it guarantees reliable detectability using current sorting infrastructure, as the material has successfully passed detection after its previous lifecycle.

The unique look also reminds us to treat the tray as a valuable resource that we collect after use for recycling.



	Part. No.	Dimensions	Volume		Part. No.	Dimensions	Volume
	2171-1K	171 x 127 x 35 mm 6.7" x 5.0" x 1.4"	505 mL 17 oz				
	2171-1F	171 x 127 x 49 mm 6.7" x 5.0" x 1.9"	665 mL 22.5 oz		2227-1D	227 x 179 x 50 mm 9.0" x 7.0" x 2.0"	1415 mL 47.8 oz
	2200-1B	201 x 155 x 45 mm 7.9" x 6.1" x 1.7"	940 mL 31.7 oz		2227-2K	227 x 178 x 43 mm 9" x 7" x 1.7"	455/ 610 mL 15.4/ 20.6 oz
	2200-1C	200 x 155 x 35 mm 7.9" x 6.1" x 1.7"	750 mL 25.4 oz		2227-3F	227 x 178 x 43 mm 9" x 7" x 1.7"	545/ 280/ 200 mL 18.4/ 9.5/ 6.7 oz
	2227-1E	227 x 178 x 35 mm 9" x 7" x 1.4"	1030 mL 34.8 oz		2235-3N	235 x 184 x 48 mm 9.2" x 7.2" x 1.9"	390/ 390/ 505 mL 13.2/ 13.2/ 17 oz

CiMa-Pak's trays, film and tray sealing systems will enhance the presentation, extend the shelf life and speed up the preparation of your food – saving you time & money.

Visit our website at **cima-pak.com** to choose from our versatile selection of tray sealers.

MONTREAL • TORONTO • CALGARY • NEW YORK

CiMa-Pak
Toll Free: 877-631-2462
cima-pak.com

CiMa-Pak

SUSTAINABLE WAYS TO PACKAGE

Trays

for your Culinary Creations

*"the first bite
is with the eye"*



PET

Please Recycle!

Circular Sustainability

CPET Trays, already made 80% of recycled PET, are 100% recyclable into the same quality tray over and over



CiMa-Pak CPET TRAYS ...

- *keep food fresh*
- *take 2 seconds to seal*
- *are easy to open*
- *are 100% leak proof when sealed*
- *are reliable and affordable*
- *ensure quality presentation*
- *are all recycled & recyclable 100%*



www.cima-pak.com

CiMa-Pak
SUSTAINABLE WAYS TO PACKAGE

Toll Free: 877-631-2462

C-PET Trays – always in stock

- C-PET trays are perfect for prepared meals — fresh, frozen, MAP or SKIN*
- ready for reheating in a microwave or conventional oven
- each compartment can be sealed separate from the other ensuring no leaks from store to home
- temperature resistance from -40°F (-40°C) to 400°F (200°C)
- shatter proof, knife and fat resistant

*SKIN - certain 1 compartment trays only

	Part. No.	Dimensions	Volume		Part. No.	Dimensions	Volume
	0095-1L	95 x 60 mm 3.7" x 2.3"	215 mL 7 oz		2187-1I*	187 x 137 x 36 mm 7.3" x 5.4" x 1.4"	620 mL 21 oz
	0124-1C	124 x 37 mm 4.8" x 1.5"	280 mL 9.5 oz		2187-1G*	187 x 137 x 45 mm 7.3" x 5.4" x 1.7"	765 mL 26 oz
	0126-1A	126 x 43 mm 4.9" x 1.7"	345 mL 11.7 oz		2187-2C*	187 x 137 x 36 mm 7.3" x 5.4" x 1.4"	350/ 200 mL 11.8/ 6.7 oz
	0160-1N	160 x 50 mm 6.3" x 2.0"	620 mL 21 oz		2200-1B	201 x 155 x 45 mm 7.9" x 6.1" x 1.8"	940 mL 32 oz
	1171-1B	170 x 98 x 34 mm 6.7" x 3.9" x 1.3"	365 mL 12.4 oz		2200-1C	201 x 155 x 35 mm 7.9" x 6.1" x 1.4"	750 mL 25.2 oz
	2171-1F	171 x 127 x 49 mm 6.7" x 5" x 1.9"	665 mL 22.5 oz		2200-1I	201 x 155 x 55 mm 7.9" x 6.1" x 2.1"	1120 mL 38 oz
	2171-1K	171 x 127 x 35 mm 6.7" x 5" x 1.4"	500 mL 16.9 oz		2202-1A	202 x 107 x 44 mm 7.9" x 4.2" x 1.7"	645 mL 22 oz
	2171-2B	171 x 127 x 38 mm 6.7" x 5" x 1.5"	315/ 215 mL 10.7/ 7.3 oz		2208-1A	209 x 159 x 34 mm 8.2" x 6.3" x 1.3"	800 mL 27 oz

Standard stock trays are available in black. *Lids are available for these trays.

C-PET Trays (continued)

	Part. No.	Dimensions	Volume		Part. No.	Dimensions	Volume
	2208-1B	209 x 159 x 45 mm 8.2" x 6.3" x 1.8"	1080 mL 36.5 oz		2227-2L*	227 x 178 x 30 mm 9" x 7" x 1.2"	400/ 330 mL 13.5/ 11.2 oz
	2208-2E	209 x 159 x 40 mm 8.2" x 6.2" x 1.6"	500/ 335 mL 16.9/ 11.3 oz		2227-3A*	227 x 178 x 30 mm 9" x 7" x 1.2"	400/ 210/ 150 mL 13.5/ 7/ 5 oz
	2208-3C	209 x 159 x 40 mm 8.2" x 6.2" x 1.6"	760 mL 26 oz		2227-3B*	227 x 178 x 30 mm 9" x 7" x 1.2"	330/ 265/ 170 mL 11.2/ 9/ 5.7 oz
	2220-1J	220 x 130 x 50 mm 8.6" x 5.1" x 1.9"	965 mL 32 oz		2227-3F*	227 x 178 x 43 mm 9" x 7" x 1.7"	545/ 280/ 200 mL 18.4/ 9.5/ 6.7 oz
	2227-1D*	227 x 178 x 50 mm 9" x 7" x 2"	1415 mL 47.8 oz		2227-3G*	227 x 178 x 42 mm 9" x 7" x 1.6"	450/ 375/ 235 mL 15.2/ 12.7/ 7.9 oz
	2227-1E*	227 x 178 x 35 mm 9" x 7" x 1.4"	1030 mL 34.8 oz		2325-1A	325 x 265 x 49 mm 12.8" x 10.4" x 1.9"	3350 mL 113 oz
	2227-1F*	227 x 178 x 59 mm 9" x 7" x 2.3"	1660 mL 56.1 oz		2325-1B	325 x 265 x 79 mm 12.8" x 10.4" x 3.1"	5100 mL 172 oz
	2227-1S*	227 x 178 x 40 mm 9" x 7" x 1.6"	1185 mL 40.1 oz		2325-1C	325 x 265 x 60 mm 12.8" x 10.4" x 2.4"	3885 mL 131.4 oz
	2227-2K*	227 x 178 x 43 mm 9" x 7" x 1.7"	455/ 610 mL 15.4/ 20.6 oz		2326-1A	324 x 175 x 48 mm 12.6" x 6.8" x 1.8"	1935 mL 65.4 oz

Standard stock trays are available in black. *Lids are available for these trays.